

HYDROFLUX
industrial



CROSSFLOWTM
BY HYDROFLUX INDUSTRIAL

SOLIDS SEPARATORS



▼ **Over 330 Clarifier installations in 3 continents**



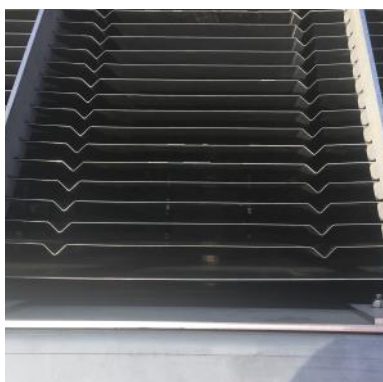
▼ With over 60 years of design and commissioning expertise, you can be assured that your Hydroflux CrossFlow™ Solids Separator will perform consistently with a long service life.

Hydroflux Industrial's CrossFlow™ Solids Separators are designed, specifically for industrial mining and high salinity applications.

Flow Configurations

- ▼ The CrossFlow™ Solids Separator range is available in the following standard sizes:

MODEL	PLATE AREA*	FLOW RATE*
CS5	6.1m ²	5.0kL/hr
CS10	11.5m ²	10.0kL/hr
CS20	20.9m ²	20.0kL/hr
CS30	31.3m ²	30.0kL/hr
CS40	41.7m ²	40.0kL/hr
CS60	62.6m ²	60.0kL/hr
CS80	84.6m ²	80.0kL/hr



HYDROFLUX
industrial

* Plate Area Projected @ 60°

* Flowrate Subject to Application

Key Features



- ▶ High Effective Surface Area
- ▶ Non-clog Crossflow Lamella Plate Configuration
- ▶ Chemically Resistant Design
- ▶ 60° 20mm Plate Spacing as Standard
- ▶ All Stainless Steel Construction
- ▶ 60° Sludge Hopper Angle



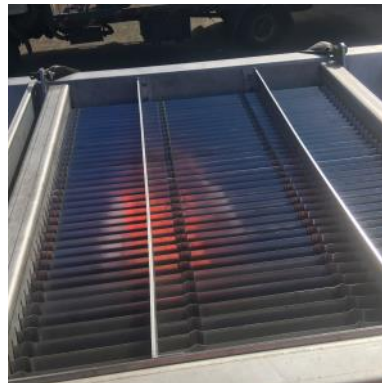
Applications

Seawater Desalination

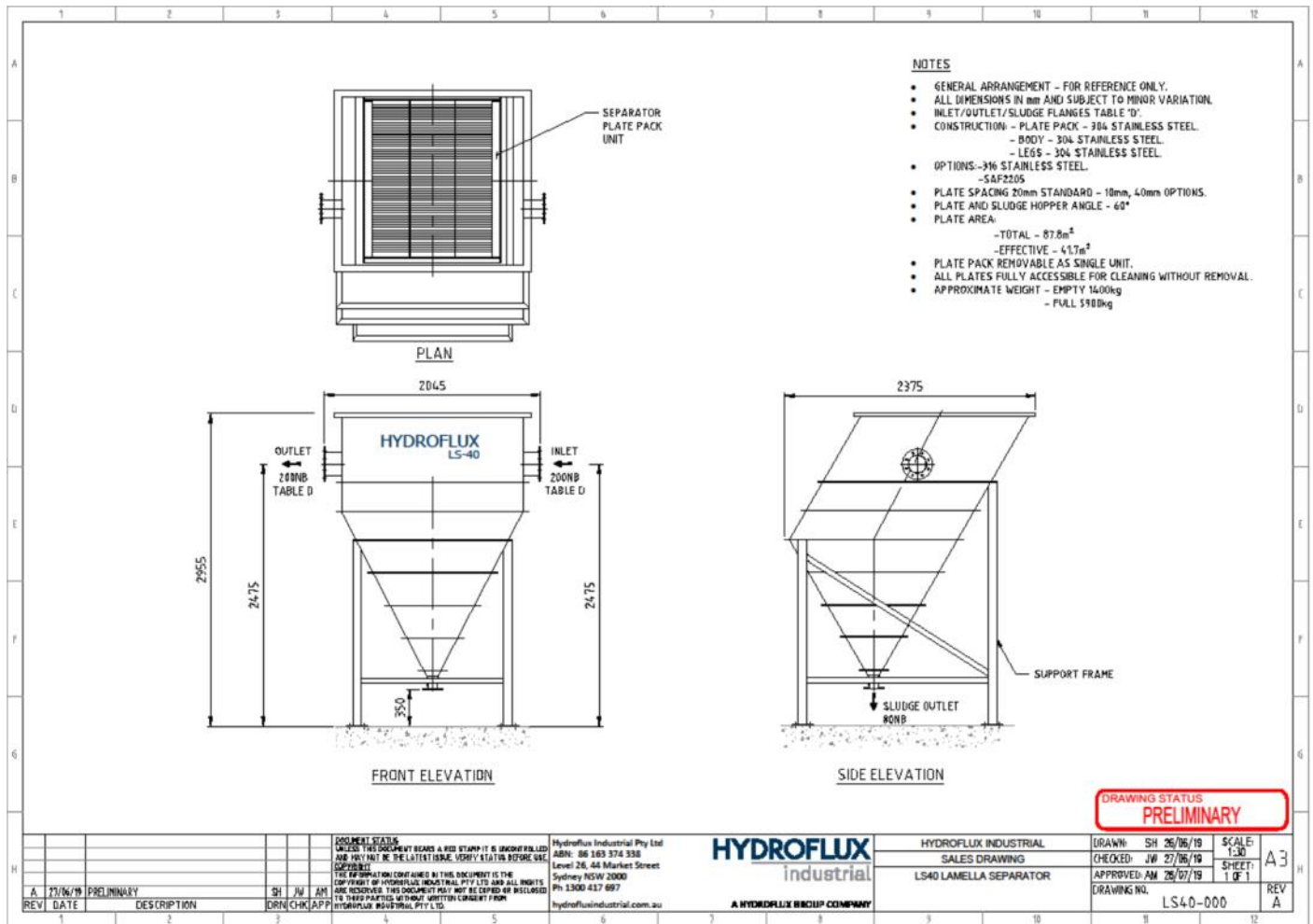
- Primary Settlement
- Backwash water recovery
- Lime softening

Industrial and Mining

- Primary solids and precipitate removal
- Secondary clarification
- Tertiary clarification
- Raw water clarification
- Corrosive applications



System components



1 Inlet

Low turbulent entry feed pipe manifold.

2 Feed Distribution

Distribution of feed along the full width.

3 Stainless Plate Pack

60° Inclined plate packs with high projected surface area.

4 Sludge Hopper

Integrated 60° sludge hopper for optimal solids concentration/ removal.

5 No Moving Parts

Static System, with one piece removable plate pack.

6 Easy Clean

All plates accessible from top for simple hose down cleaning.

Build Specification

- ▼ All Hydroflux CrossFlow™ Solids Separators are fabricated from 100% stainless steel. This includes the body, weirs, plates, plate frames and hopper.

The following table summarises the standard material selection. Variations on the material specifications can be made, please consult Hydroflux Industrial for further detail.

Standard Materials
304 Stainless Steel 2B
316 Stainless Steel 2B
SAF 2205 Stainless Steel



Hydroflux Industrial Pty Ltd

Australia and Australasia

Head Office:

Level 26, 44 Market Street
Sydney NSW 2000 Australia

Sutherland Engineering Office:

3-5 Stapleton Ave.
Sutherland NSW 2232 Australia

Gordon Office:

828 Pacific Hwy
Gordon NSW 2072 Australia

Victorian Office:

84 Hotham St. Preston
VIC 3072 Australia

Queensland Office:

1 Westlink Court
Darra QLD 4076

Perth Office:

Level 28, AMP Tower
140 St Georges Terrace
Perth WA 6000

Int: +61 2 9089 8833

Aus: 1300 417 697

info@hydrofluxindustrial.com.au

www.hydrofluxindustrial.com.au

New Zealand

Head Office:

Level 26, PwC Tower
188 Quay St
Auckland 1010, New Zealand

Int: +64 9 352 2052

NZ: 09 352 2052

info@hydroflux.nz

www.hydroflux.nz

Fiji and Pacific Islands

Head Office:

Suva Business Centre
217 Victoria Parade
Suva, Fiji

Int: +679 773 6950

Fiji: 773 6950

info@hydroflux.com.fj

www.hydroflux.com.fj

United Kingdom and Europe

Head Office:

1000 Lakeside North Harbour Western Road
Portsmouth PO6 3EZ

Int: +44 23 9270 4087

UK: 0239 270 4087

info@hydroflux.uk

www.hydroflux.uk

Hydroflux Industrial is GRS Certified to the following standards

ISO 45001 SAFETY MANAGEMENT SYSTEM



Certificate Number: 47714001610008

ISO 14001 ENVIRONMENTAL MANAGEMENT SYSTEM



Certificate Number: 47745001610008

ISO 31000 RISK MANAGEMENT SYSTEMS



Certificate Number: 477310006176001